

Cot 90° C-S
bend 90°
Rohrbogen 90° K-S

Cod
462

02011

DN	A	B	C	D	E
10	26	9	26		39
15	35	15	35		48
20	40	19	40		53
25	50	25	50		65
32	55	31	55		70
40	60	37	60		75
50	70	49	70		86
65	80	66	80		97
80	90	81	90		107
100	100	100	100		120
125	187,5	125	187,5		221,5
150	225	150	225		262

Cot 90° F-F
bend 90°
Rohrbogen 90° G-G

Cod
455

02020

DN	A	B	C	D	E
10	39	9	26	Rd 28x1/8"	4
15	48	15	35	Rd 34x1/8"	4
20	53	19	40	Rd 44x1/6"	6
25	65	25	50	Rd 52x1/6"	7
32	70	31	55	Rd 58x1/6"	7
40	75	37	60	Rd 65x1/6"	7
50	86	49	70	Rd 78x1/6"	7
65	97	66	80	Rd 95x1/6"	8
80	107	81	90	Rd 110x1/4"	8
100	120	100	100	Rd 130x1/4"	10
125	221,5	125	187,5	Rd 160x1/4"	12
150	262	150	225	Rd 190x1/4"	13

Cot 90° F-O
bend 90°
Rohrbogen 90° G-K/M

Cod
456

02021

DN	A	B	C	D	E
10	39	9	26	Rd 28x1/8"	4
15	48	15	35	Rd 34x1/8"	4
20	53	19	40	Rd 44x1/6"	6
25	65	25	50	Rd 52x1/6"	7
32	70	31	55	Rd 58x1/6"	7
40	75	37	60	Rd 65x1/6"	7
50	86	49	70	Rd 78x1/6"	7
65	97	66	80	Rd 95x1/6"	8
80	107	81	90	Rd 110x1/4"	8
100	120	100	100	Rd 130x1/4"	10
125	221,5	125	187,5	Rd 160x1/4"	12
150	262	150	225	Rd 190x1/4"	13

Cot 90° O-O
bend 90° K/M-K/M
Rohrbogen 90° K/M-K/M

Cod
466

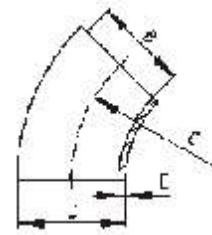
02022

DN	A	B	C	D	E
10	39	9		Rd 28x1/8"	
15	48	15		Rd 34x1/8"	
20	53	19		Rd 44x1/6"	
25	65	25		Rd 52x1/6"	
32	70	31		Rd 58x1/6"	
40	75	37		Rd 65x1/6"	
50	86	49		Rd 78x1/6"	
65	97	66		Rd 95x1/6"	
80	107	81		Rd 110x1/4"	
100	120	100		Rd 130x1/4"	
125	221,5	125		Rd 160x1/4"	
150	262	150		Rd 190x1/4"	

DN	A	B	C	D	E
10		9	26	12	1,5
15		15	35	18	1,5
20		19	40	22	1,5
25		25	50	28	1,5
32		31	55	34	1,5
40		37	60	40	1,5
50		49	70	52	1,5
65		66	80	70	2
80		81	90	85	2
100		100	100	104	2
125		125	187,5	129	2
150		150	225	154	2
200		200	306	204	2

Cot sudabil 45° S-S
welding bend 45°
Rohrbogen 45° S-S

Cod
411

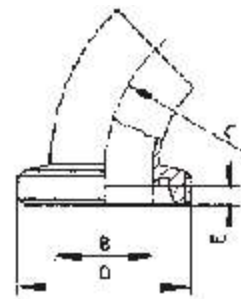


02100

DN	A	B	C	D	E
10		9	26	Rd 28x1/8"	4
15		15	35	Rd 34x1/8"	4
20		19	40	Rd 44x1/6"	6
25		25	50	Rd 52x1/6"	7
32		31	55	Rd 58x1/6"	7
40		37	60	Rd 65x1/6"	7
50		49	70	Rd 78x1/6"	7
65		66	80	Rd 95x1/6"	8
80		81	90	Rd 110x1/4"	8
100		100	100	Rd 130x1/4"	10

Cot 45° F-S
bend 45°
Rohrbogen 45° G-S

Cod
452 a

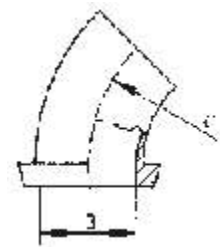


02110

DN	A	B	C	D	E
10		9	26		
15		15	35		
20		19	40		
25		25	50		
32		31	55		
40		37	60		
50		49	70		
65		66	80		
80		81	90		
100		100	100		

Cot 45° C-S
bend 45°
Rohrbogen 45° K-S

Cod
462 a

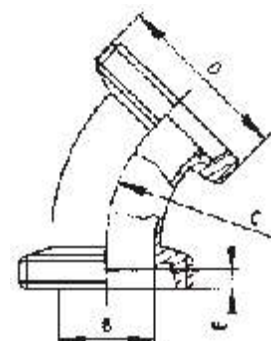


02111

DN	A	B	C	D	E
10		9	26	Rd 28x1/8"	4
15		15	35	Rd 34x1/8"	4
20		19	40	Rd 44x1/6"	6
25		25	50	Rd 52x1/6"	7
32		31	55	Rd 58x1/6"	7
40		37	60	Rd 65x1/6"	7
50		49	70	Rd 78x1/6"	7
65		66	80	Rd 95x1/6"	8
80		81	90	Rd 110x1/4"	8
100		100	100	Rd 130x1/4"	10

Cot 45° F-F
bend 45°
Rohrbogen 45° G-G

Cod
455 a



02120

Cot 45° F-O
bend 45°
Rohrbogen 45° G-K/M

Cod
456 a

02121

DN	A	B	C	D	E
10		9	26	Rd 28x1/8"	4
15		15	35	Rd 34x1/8"	4
20		19	40	Rd 44x1/6"	6
25		25	50	Rd 52x1/6"	7
32		31	55	Rd 58x1/6"	7
40		37	60	Rd 65x1/6"	7
50		49	70	Rd 78x1/6"	7
65		66	80	Rd 95x1/6"	8
80		81	90	Rd 110x1/4"	8
100		100	100	Rd 130x1/4"	10

Cot 45° O-O
bend 45°
Rohrbogen 45° K/M-K/M

Cod
466 a

02122

DN	A	B	C	D	E
10		9	26	Rd 28x1/8"	4
15		15	35	Rd 34x1/8"	4
20		19	40	Rd 44x1/6"	6
25		25	50	Rd 52x1/6"	7
32		31	55	Rd 58x1/6"	7
40		37	60	Rd 65x1/6"	7
50		49	70	Rd 78x1/6"	7
65		66	80	Rd 95x1/6"	8
80		81	90	Rd 110x1/4"	8
100		100	100	Rd 130x1/4"	10

Cot cu reducere 90° F-F
reducing bend 90°
Reducierbogen 90° G-G

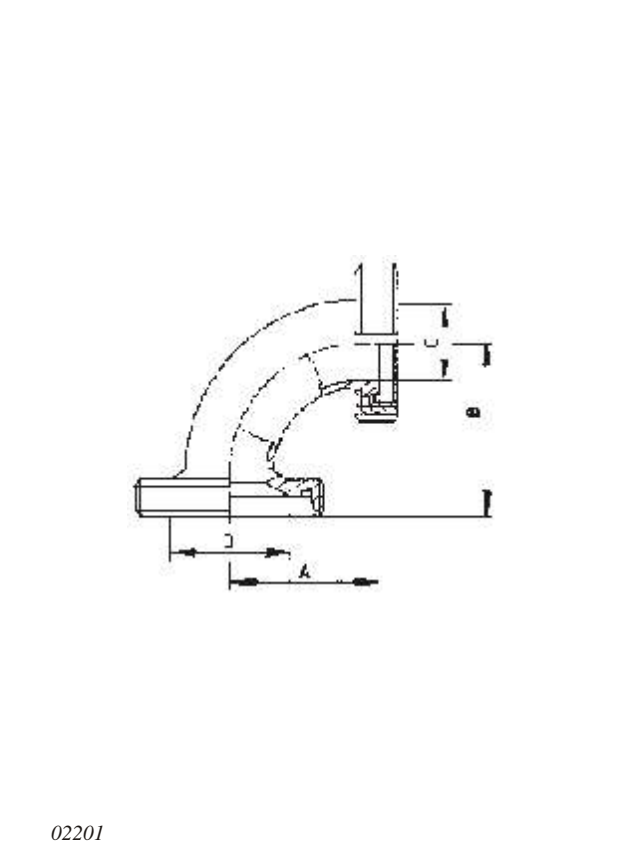
Cod
479

02200

DN	A	B	C	D	E
25/10	43	55	9	25	
25/15	52	64	15	25	
25/20	59	67	19	25	
32/10	43	55	9	31	
32/15	52	64	15	31	
32/20	59	69	19	31	
32/25	72	81	25	31	
40/15	52	55	15	37	
40/20	59	69	19	37	
40/25	72	78	25	37	
40/32	77	87	31	37	
50/20	59	69	19	49	
50/25	72	76	25	49	
50/32	77	84	31	49	
50/40	82	93	37	49	
65/25	72	84	25	66	
65/32	77	94	32	66	
65/40	82	99	37	66	
65/50	93	108	49	66	
80/32	77	96	31	81	
80/40	82	103	37	81	
80/50	93	115	49	81	
80/65	105	123	66	81	
100/50	93	119	49	100	
100/65	105	129	66	100	
100/80	115	141	81	100	

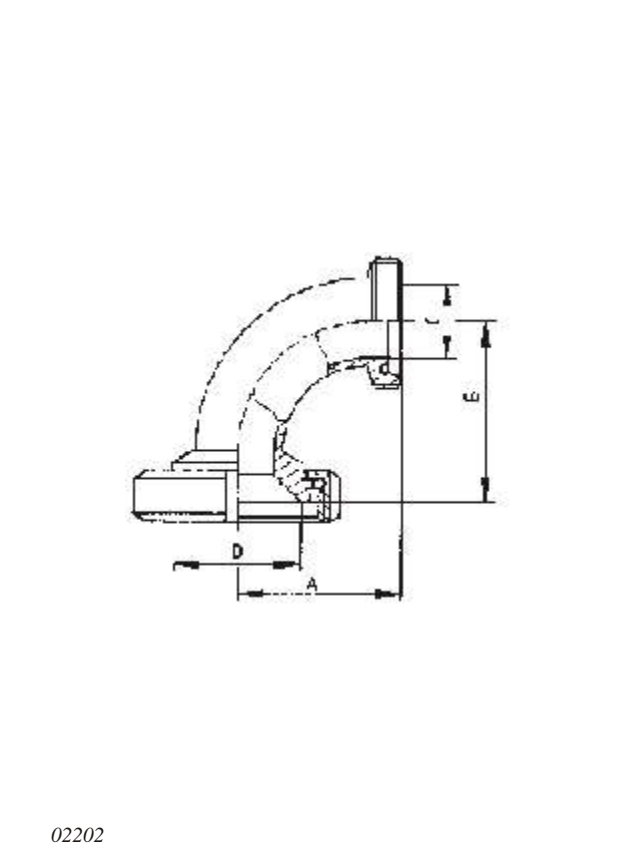
DN	A	B	C	D	E
25/10	39	55	9	25	
25/15	48	64	15	25	
25/20	53	67	19	25	
32/10	39	55	9	31	
32/15	48	64	15	31	
32/20	53	69	19	31	
32/25	65	81	25	31	
40/15	48	55	15	37	
40/20	53	69	19	37	
40/25	65	78	25	37	
40/32	70	87	31	37	
50/20	53	69	19	49	
50/25	65	76	25	49	
50/32	70	84	31	49	
50/40	75	93	37	49	
65/25	65	84	25	66	
65/32	70	94	32	66	
65/40	75	99	37	66	
65/50	86	108	49	66	
80/32	70	96	31	81	
80/40	75	103	37	81	
80/50	86	115	49	81	
80/65	97	123	66	81	
100/50	86	119	49	100	
100/65	97	129	66	100	
100/80	107	141	81	100	

Cot cu reducere 90° **F-O** Cod
 reducing bend 90°
 Reducierbogen 90° G-K/M 477



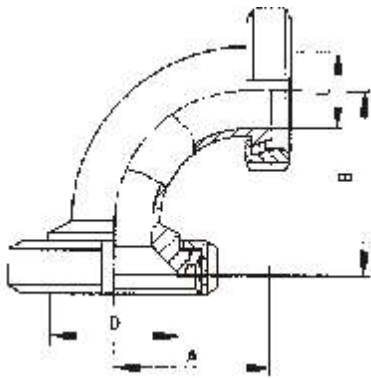
DN	A	B	C	D	E
25/10	43	48	9	25	
25/15	52	57	15	25	
25/20	59	60	19	25	
32/10	43	51	9	31	
32/15	52	58	15	31	
32/20	59	63	19	31	
32/25	72	74	25	31	
40/15	52	60	15	37	
40/20	59	65	19	37	
40/25	72	74	25	37	
40/32	77	79	31	37	
50/25	72	78	25	49	
50/32	77	78	31	49	
50/40	82	86	37	49	
65/25	72	82	25	66	
65/32	77	87	32	66	
65/40	82	86	37	66	
65/50	93	100	49	66	
80/32	77	90	31	81	
80/40	82	96	37	81	
80/50	93	100	49	81	
80/65	105	115	66	81	
100/50	93	110	49	100	
100/65	105	120	66	100	
100/80	115	132	81	100	

Cot cu reducere 90° **O-F** Cod
 reducing bend 90°
 Reducierbogen 90° K/M-G 482



Cot cu reducere 90° O-O
reducing bend 90° K/M-K/M
Reducierbogen 90° K/M-K/M

Cod
478

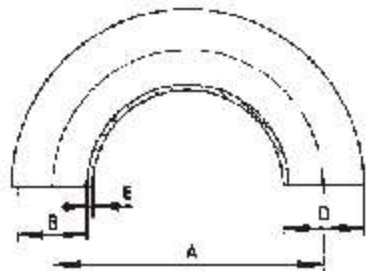


02203

DN	A	B	C	D	E
25/10	39	48	9	25	
25/15	48	57	15	25	
25/20	53	60	19	25	
32/10	39	51	9	31	
32/15	48	58	15	31	
32/20	53	63	19	31	
32/25	65	74	25	31	
40/15	48	60	15	37	
40/20	53	65	19	37	
40/25	65	74	25	37	
40/32	70	79	31	37	
50/25	65	78	25	49	
50/32	70	78	31	49	
50/40	75	86	37	49	
65/25	65	82	25	66	
65/32	70	87	32	66	
65/40	75	86	37	66	
65/50	86	100	49	66	
80/32	70	90	31	81	
80/40	75	96	37	81	
80/50	86	100	49	81	
80/65	97	115	66	81	
100/50	86	110	49	100	
100/65	97	120	66	100	
100/80	107	132	81	100	

Cot sudabil 180° S-S
welding bend 180° S-S
Rohrbogen 180° S-S

Cod
486

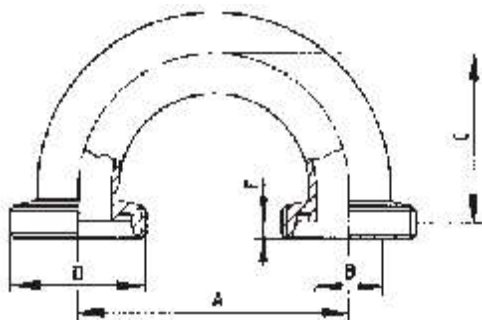


02300

DN	A	B	C	D	E
10	52	9		12	1,5
15	70	15		18	1,5
20	80	19		22	1,5
25	100	25		28	1,5
32	110	31		34	1,5
40	120	37		40	1,5
50	140	49		52	1,5
65	160	66		70	2
80	180	81		85	2
100	200	100		104	2
125	375	125		129	2
150	450	150		154	2

Cot 180° F-F
bend 180° G-G
Rohrbogen 180° G-G

Cod
487



02310

DN	A	B	C	D	E
10	52	9	42	Rd 28x1/8"	4
15	70	15	52	Rd 34x1/8"	4
20	80	19	59	Rd 44x1/6"	6
25	100	25	72	Rd 52x1/6"	7
32	110	31	77	Rd 58x1/6"	7
40	120	37	82	Rd 65x1/6"	7
50	140	49	93	Rd 78x1/6"	7
65	160	66	105	Rd 95x1/6"	8
80	180	81	115	Rd 110x1/4"	8
100	200	100	130	Rd 130x1/4"	10

DN	A	B	C	D	E
10	52	9	39	Rd 28x1/8"	
15	70	15	48	Rd 34x1/8"	
20	80	19	53	Rd 44x1/6"	
25	100	25	65	Rd 52x1/6"	
32	110	31	70	Rd 58x1/6"	
40	120	37	75	Rd 65x1/6"	
50	140	49	86	Rd 78x1/6"	
65	160	66	97	Rd 95x1/6"	
80	180	81	107	Rd 110x1/4"	
100	200	100	120	Rd 130x1/4"	

Cot 180° F-O
bend 180° G-K/M
Rohrbogen 180° G-K/M

Cod
489

02311

DN	A	B	C	D	E
10	52	9	39	Rd 28x1/8"	
15	70	15	48	Rd 34x1/8"	
20	80	19	53	Rd 44x1/6"	
25	100	25	65	Rd 52x1/6"	
32	110	31	70	Rd 58x1/6"	
40	120	37	75	Rd 65x1/6"	
50	140	49	86	Rd 78x1/6"	
65	160	66	97	Rd 95x1/6"	
80	180	81	107	Rd 110x1/4"	
100	200	100	120	Rd 130x1/4"	

Cot 180° O-O
bend 180° K/M-K/M
Rohrbogen 180° K/M-K/M

Cod
488

02312

DN	A	B	C	D	E
10	26	10		12	1
15	35	15		18	1,5
20	40	19		22	1,5
25	50	25		28	1,5
32	55	31		34	1,5
40	60	37		40	1,5
50	70	49		52	1,5
65	80	66		70	2
80	90	81		85	2
100	100	100		104	2

Cot T S-S-S
tee bend S-S-S
T-Bogen S-S-S

Cod
573 a

02400

DN	A	B	C	D	E
25	72	25		Rd 52x1/6"	7
32	77	31		Rd 58x1/6"	7
40	82	37		Rd 65x1/6"	7
50	93	49		Rd 78x1/6"	7
65	105	66		Rd 95x1/6"	8
80	115	81		Rd 110x1/4"	8
100	130	100		Rd 130x1/4"	10

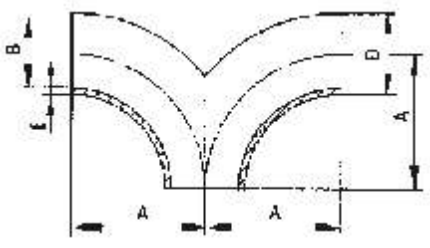
Cot T F-F-F
tee bend G-G-G
T-Bogen G-G-G

Cod
573

02410

Cot dublu S-S-S
double tee bend S-S-S
Hosenbogen S-S-S

Cod
574 a

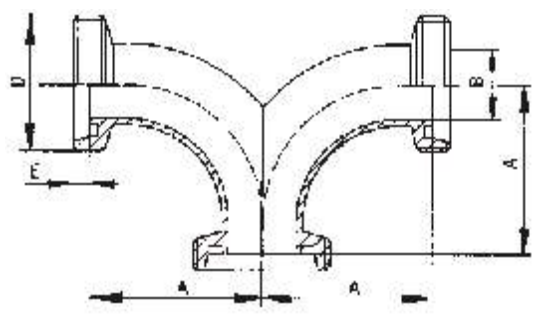


02500

DN	A	B	C	D	E
25	50	25		28	1,5
32	55	31		34	1,5
40	60	37		40	1,5
50	70	49		52	1,5
65	80	66		70	2
80	90	81		85	2
100	100	100		104	2
125	187,5	125		129	2
150	225	150		154	2
200	300	200		204	2

Cot dublu F-F-F
double tee bend G-G-G
Hosenbogen G-G-G

Cod
574

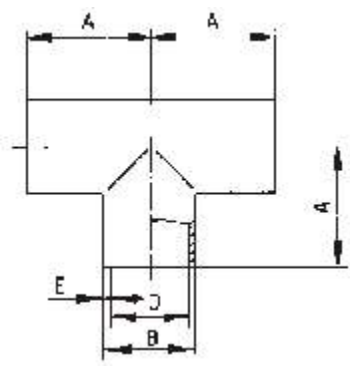


02510

DN	A	B	C	D	E
25	72	25		Rd 52x1/6"	7
32	77	31		Rd 58x1/6"	7
40	82	37		Rd 65x1/6"	7
50	93	49		Rd 78x1/6"	7
65	105	66		Rd 95x1/6"	8
80	115	81		Rd 110x1/4"	8
100	130	100		Rd 130x1/4"	10
125	233,5	125		Rd 160x1/4"	12
150	275	150		Rd 190x1/4"	13

Racord T S-S-S
welding tee S-S-S
T-Stück S-S-S

Cod
5222

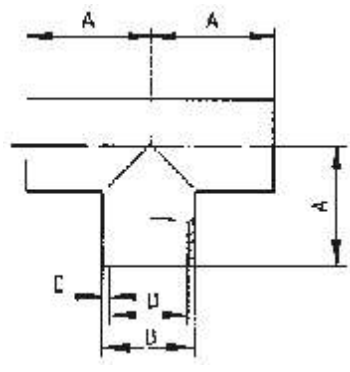


02600

DN	A	B	C	D	E
10	26	12		9	1,5
15	35	18		15	1,5
20	40	22		19	1,5
25	50	28		25	1,5
32	55	34		31	1,5
40	60	40		37	1,5
50	70	52		49	1,5
65	80	70		66	2
80	90	85		81	2
100	100	104		100	2
125	187,5	129		125	2
150	225	154		150	2
200	300	204		200	2

Racord T, varianta 2 S-S-S
welding tee, line 2 S-S-S
T-Stück, Reihe 2 S-S-S

Cod
5222 n



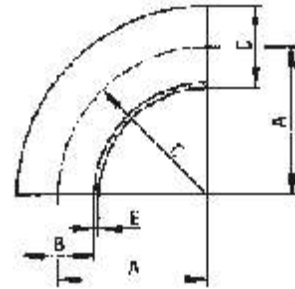
02609

DN	A	B	C	D	E
10	26	13		10	1,5
15	35	19		16	1,5
20	40	23		20	1,5
25	50	29		26	1,5
32	55	35		32	1,5
40	60	41		38	1,5
50	70	53		50	1,5

DN	A	B	C	D	E
10	26	9	26	12	1,5
15	35	15	35	18	1,5
20	40	19	40	22	1,5
25	50	25	50	28	1,5
32	55	31	55	34	1,5
40	60	37	60	40	1,5
50	70	49	70	52	1,5
65	80	66	80	70	2
80	90	81	90	85	2
100	100	100	100	104	2
125	187,5	125	187,5	129	2
150	225	150	225	154	2
200	300	200	300	204	2

Cot sudabil 90°, varianta 1 S-S
welding bend 90°
Rohrbögen 90°, Reihe 1 S-S

422

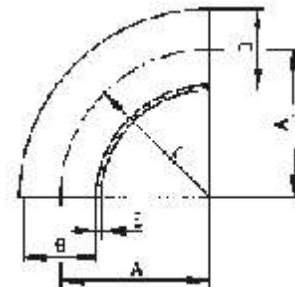


02000

DN	A	B	C	D	E
10	26	10	26	13	1,5
15	35	16	35	19	1,5
20	40	20	40	23	1,5
25	50	26	50	29	1,5
32	55	32	55	35	1,5
40	60	38	60	41	1,5
50	70	50	70	53	1,5

Cot sudabil 90°, varianta 2 S-S
welding bend 90°
Rohrbögen 90°, Reihe 2 S-S

Cod
422 n

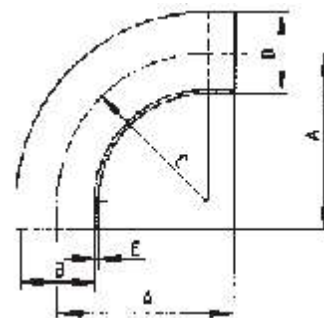


02003

DN	A	B	C	D	E
10	38	9	26	12	1,5
15	47	15	35	18	1,5
20	52	19	40	22	1,5
25	70	25	50	28	1,5
32	78	31	55	34	1,5
40	85	37	60	40	1,5
50	97	49	70	52	1,5
65	110	66	80	70	2
80	118	81	90	85	2
100	140	100	100	104	2

Cot mandrinabil 90° M-M
bend for expansion 90°
Walzbögen 90°, W-W

Cod
433

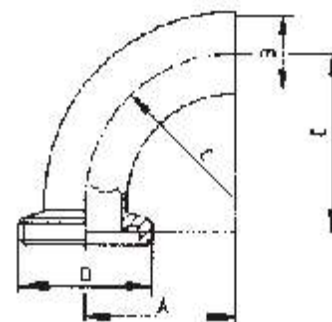


02001

DN	A	B	C	D	E
10	26	9	26	Rd 28x1/8"	39
15	35	15	35	Rd 34x1/8"	48
20	40	19	40	Rd 44x1/6"	53
25	50	25	50	Rd 52x1/6"	65
32	55	31	55	Rd 58x1/6"	70
40	60	37	60	Rd 65x1/6"	75
50	70	49	70	Rd 78x1/6"	86
65	80	66	80	Rd 95x1/6"	97
80	90	81	90	Rd 110x1/4"	107
100	100	100	100	Rd 130x1/4"	120
125	187,5	125	187,5	Rd 160x1/4"	221,5
150	225	150	225	Rd 190x1/4"	262

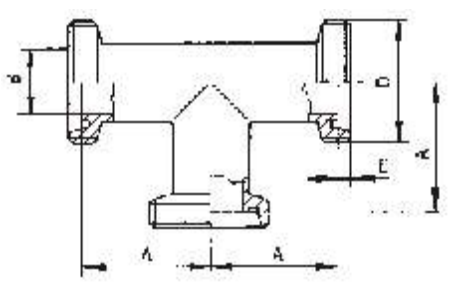
Cot 90° F-S
bend 90°
Rohrbogen 90°, G-S

Cod
452



02010

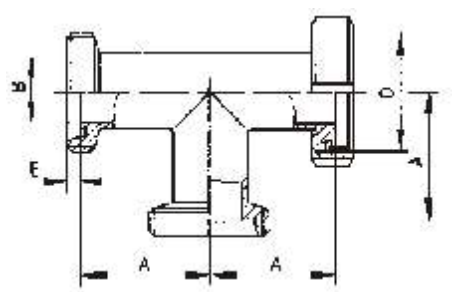
Racord T F-F-F
tee all ends male
T-Stuck G-G-G **Cod 5555**



02630

Dn	A	B	C	D	E
10	39	9		Rd 28x1/8"	4
15	48	15		Rd 34x1/8"	4
20	53	19		Rd 44x1/6"	6
25	65	25		Rd 52x1/6"	7
32	70	31		Rd 58x1/6"	7
40	75	37		Rd 65x1/6"	7
50	86	49		Rd 78x1/6"	7
65	97	66		Rd 95x1/6"	8
80	107	81		Rd 110x1/4"	8
100	120	100		Rd 130x1/4"	10
125	221,5	125		Rd 160x1/4"	12
150	262	150		Rd 190x1/4"	13

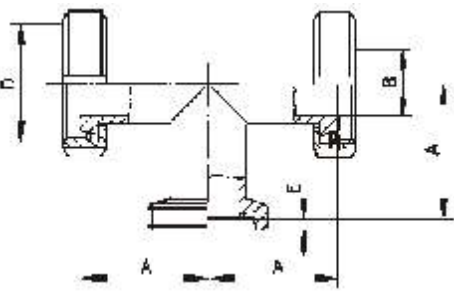
Racord T F-O-F
tee all ends male/female, branch male
T-Stuck G-K/M-G **Cod 5565**



02631

Dn	A	B	C	D	E
10	39	9		Rd 28x1/8"	4
15	48	15		Rd 34x1/8"	4
20	53	19		Rd 44x1/6"	6
25	65	25		Rd 52x1/6"	7
32	70	31		Rd 58x1/6"	7
40	75	37		Rd 65x1/6"	7
50	86	49		Rd 78x1/6"	7
65	97	66		Rd 95x1/6"	8
80	107	81		Rd 110x1/4"	8
100	120	100		Rd 130x1/4"	10
125	221,5	125		Rd 160x1/4"	12
150	262	150		Rd 190x1/4"	13

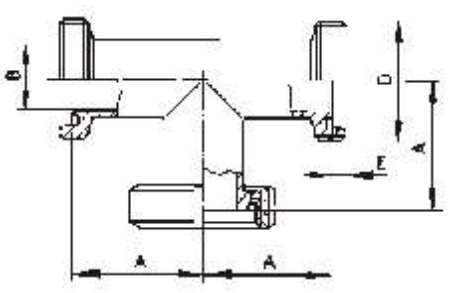
Racord T O-O-F
tee all ends female/female, branch male
T-Stuck K/M-K/M-G **Cod 5665**



02632

Dn	A	B	C	D	E
10	39	9		Rd 28x1/8"	4
15	48	15		Rd 34x1/8"	4
20	53	19		Rd 44x1/6"	6
25	65	25		Rd 52x1/6"	7
32	70	31		Rd 58x1/6"	7
40	75	37		Rd 65x1/6"	7
50	86	49		Rd 78x1/6"	7
65	97	66		Rd 95x1/6"	8
80	107	81		Rd 110x1/4"	8
100	120	100		Rd 130x1/4"	10
125	221,5	125		Rd 160x1/4"	12
150	262	150		Rd 190x1/4"	13

Racord T F-F-O
tee all ends male/male, branch female
T-Stuck G-G-K/M **Cod 5556**



02633

Dn	A	B	C	D	E
10	39	9		Rd 28x1/8"	4
15	48	15		Rd 34x1/8"	4
20	53	19		Rd 44x1/6"	6
25	65	25		Rd 52x1/6"	7
32	70	31		Rd 58x1/6"	7
40	75	37		Rd 65x1/6"	7
50	86	49		Rd 78x1/6"	7
65	97	66		Rd 95x1/6"	8
80	107	81		Rd 110x1/4"	8
100	120	100		Rd 130x1/4"	10
125	221,5	125		Rd 160x1/4"	12
150	262	150		Rd 190x1/4"	13

Dn	A	B	C	D	E
10	39	9		Rd 28x1/8"	4
15	48	15		Rd 34x1/8"	4
20	53	19		Rd 44x1/6"	6
25	65	25		Rd 52x1/6"	7
32	70	31		Rd 58x1/6"	7
40	75	37		Rd 65x1/6"	7
50	86	49		Rd 78x1/6"	7
65	97	66		Rd 95x1/6"	8
80	107	81		Rd 110x1/4"	8
100	120	100		Rd 130x1/4"	10
125	221,5	125		Rd 160x1/4"	12
150	262	150		Rd 190x1/4"	13

Racord T F-O-O
tee male/female, branch female
T-Stück G-K/M-K/M

Cod
5566

02634

Dn	A	B	C	D	E
10	39	9		Rd 28x1/8"	
15	48	15		Rd 34x1/8"	
20	53	19		Rd 44x1/6"	
25	65	25		Rd 52x1/6"	
32	70	31		Rd 58x1/6"	
40	75	37		Rd 65x1/6"	
50	86	49		Rd 78x1/6"	
65	97	66		Rd 95x1/6"	
80	107	81		Rd 110x1/4"	
100	120	100		Rd 130x1/4"	

Racord T O-O-O
tee all ends female
T-Stück K/M-K/M-K/M

Cod
5666

02635

Dn	A	B	C	D	E
10	26	9		12	
15	35	15		18	
20	40	19		22	
25	50	25		28	
32	55	31		34	
40	60	37		40	
50	70	49		52	
65	80	66		70	
80	90	81		85	
100	100	100		104	
125	187,5	125		129	
150	225	150		154	
200	300	200		204	

Cruce sudabil S-S-S-S
welding cross
Kreuzstück S-S-S-S

Cod
576

02700

Dn	A	B	C	D	E
10	26	9	-	12	
15	35	15	-	18	
20	40	19	-	22	
25	50	25	31	28	
32	55	31	39	34	
40	60	37	46	40	
50	70	49	59	52	
65	80	66	79	70	
80	90	81	95	85	
100	100	100	118	104	
125	187,5	125	-	129	
150	225	150	-	154	
200	300	200	-	204	

Cruce sudabil scurt S-S-S-S
welding cross, short
Kreuzstück,kurz S-S-S-S

Cod
575

02704

Cruce F-F-F-F
cross
Kreuzstück G-G-G-G

Cod
560

02710

Dn	A	B	C	D	E
10	43		9	Rd 28x1/8"	
15	52		15	Rd 34x1/8"	
20	59		19	Rd 44x1/6"	
25	72		25	Rd 52x1/6"	
32	77		31	Rd 58x1/6"	
40	82		37	Rd 65x1/6"	
50	93		49	Rd 78x1/6"	
65	105		66	Rd 95x1/6"	
80	115		81	Rd 110x1/4"	
100	130		100	Rd 130x1/4"	

Cot sudabil 90° - oli S-S
welding bend 90°, inch, short
Rohrbögen 90°, Zoll, kurz S-S

Cod
422 Z

02005

Dn	A	B	C	D	E
1"	51	22,9	51	25,4	1,5
1 1/4"	50	29,3	50	31,8	1,5
1 1/2"	60	35,1	60	38,1	1,5
2"	67,5	47,8	67,5	50,8	1,5
2 1/2"	82,5	60,5	82,5	63,5	1,6
3"	85	72,1	85	76,2	1,6
4"	133,5	97,6	133,5	101,6	2

Cot sudabil 90° - oli S-S
welding bend 90°, inch, short
Rohrbögen 90°, Zoll, kurz S-S

Cod
433 Z

02006

Dn	A	B	C	D	E
25/1"	80	22,5	51	25,4	1,5
40/1 1/2"	105	35,5	76	38,1	1,5
50/2"	130	48,5	102	50,8	1,5
65/2 1/2"	160	60,5	127	63,5	1,6
75/3"	190	72,1	140	76,2	1,6
100/4"	200	97,6	152,4	101,6	2

Cot cu guler 90° - oli
bend 90° clamp, inch
Rohrbögen 90°, Clamp, Zoll

Cod
444 Z

42019

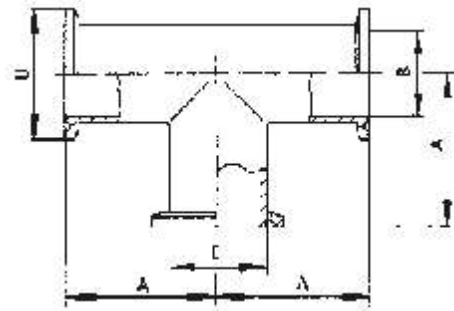
Dn	A	B	C	D	E
1"	72,5		25,4	50,5	1,65
1 1/2"	81,5		38,1	50,5	1,65
2"	89		50,8	64,0	1,65
2 1/2"	110,5		63,5	77,5	1,65
3"	113		76,2	91,0	1,65
4"	161,5		101,6	119,0	2,11

Dn	A	B	C	D	E
1"	72,5	22,9	25,4	50,5	
1 1/2"	81,5	35,1	38,1	50,5	
2"	89	47,8	50,8	64,0	
2 1/2"	110,5	60,5	63,5	77,5	
3"	113	72,1	76,2	91,0	
4"	161,5	97,6	101,6	119,0	

Dn	A	B	C	D	E
1"	51	25,4		22,4	1,5
1 1/4"	50	31,8		28,8	1,5
1 1/2"	60	38,1		35,1	1,5
2"	67,5	50,8		47,8	1,5
2 1/2"	82,5	63,5		60,5	1,5
3"	85	76,2		72,2	2
4"	133,5	101,6		97,6	2

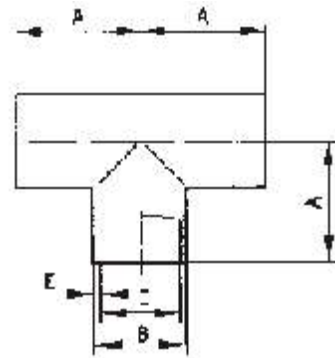
Dn	A	B	C	D	E
25/20	50		129		125
32/20	55	29			125
32/25	55	35			125
40/20	60	35		26	
40/25	60	41		32	20
40/32	60	41		32	20
50/20	70	41		38	26
50/25	70	53		38	20
50/32	70	53		38	26
50/40	70	53		50	32
65/25	80	53		50	20
65/32	80	70		50	26
65/40	80	70		50	32
65/50	80	70		66	38
80/25	90	70		66	26
80/32	90	85		66	32
80/40	90	85		66	38
80/50	90	85		81	50
80/65	90	85		81	26
100/32	100	85		81	32
100/40	100	104		81	38
100/50	100	104		81	50
100/65	100	104		100	66
100/80	100	104		100	32
125/32	187,5	104		100	38
125/40	187,5	129		100	50
125/50	187,5	129		100	66
125/65	187,5	129		125	81
125/80	187,5	129		125	32

Racord T cu guler - oli
tee clamp
T-Stück Clamp **Cod**
5444 Z



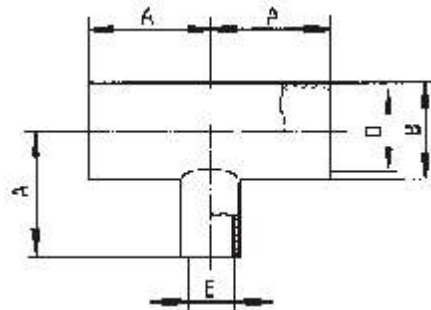
42619

Racord T sudabil - oli S-S-S
welding tee, inch
T-Stück, Zoll S-S-S **Cod**
5222 Z



02605 z

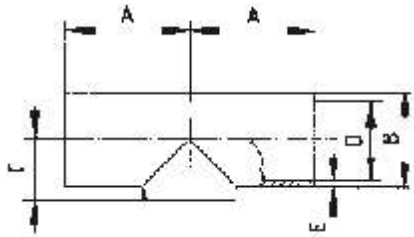
T sudabil cu reduc ie lung S-S-S
welding reducing tee, long
T-Stück, reduziert, lang S-S-S **Cod**
4528



02605

T sudabil scurt S-S-S
welding tee, short
T-Stück, kurzer Abzweig S-S-S

Cod
5111

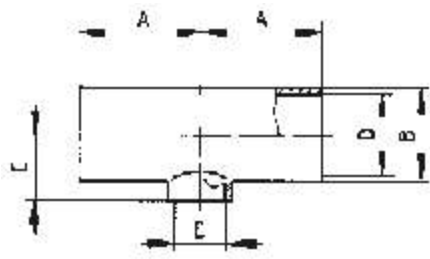


02603

Dn	A	B	C	D	E
10	26	12	8	9	1,5
15	35	18	11,5	15	1,5
20	40	22	14,5	19	1,5
25	50	28	15,5	25	1,5
32	55	34	19,5	31	1,5
40	60	40	23	37	1,5
50	70	52	29,5	49	1,5
65	80	70	39,5	66	2
80	90	85	47,5	81	2
100	100	104	59	100	2
125	187,5	129	72	125	2
150	225	154	85	150	2
200	300	204	-	200	2

T sudabil cu reduc ie scurt S-S-S
welding reducing tee, short
T-Stück, reduziert, kurzer S-S-S

Cod
5228



02604

Dn	A	B	C	D	E
20/15	40	19	12	15	16
25/15	50	25	16	15	16
25/20	50	25	16	19	20
32/15	55	31	20	15	16
32/20	55	31	20	19	20
32/25	55	31	20	25	26
40/15	60	37	23	15	16
40/20	60	37	23	19	20
40/25	60	37	23	25	26
40/32	60	37	23	31	32
50/15	70	49	29	15	16
50/20	70	49	29	19	20
50/25	70	49	29	25	26
50/32	70	49	29	31	32
50/40	70	49	29	37	38
65/15	80	66	39	15	16
65/20	80	66	39	19	20
65/25	80	66	39	25	26
65/32	80	66	39	31	32
65/40	80	66	39	37	38
65/50	80	66	39	49	50
80/20	90	81	47	19	20
80/25	90	81	47	25	26
80/32	90	81	47	31	32
80/40	90	81	47	37	38
80/50	90	81	47	49	50
80/65	90	81	47	66	66
100/25	100	100	57	25	26
100/32	100	100	57	31	32
100/40	100	100	57	37	38
100/50	100	100	57	49	50
100/65	100	100	58	66	66
100/80	100	100	58	81	81
125/25	187,5	125	71,5	25	26
125/32	187,5	125	71,5	31	32
125/40	187,5	125	71,5	37	38
125/50	187,5	125	71,5	49	50
125/65	187,5	125	71,5	66	66
125/80	187,5	125	71,5	81	81
125/100	187,5	125	71,5	100	100
150/40	225	150	87	37	38
150/50	225	150	87	49	50
150/65	225	150	87	66	66
150/80	225	150	87	81	81
150/100	225	150	87	100	100
	225	150	87	125	125