


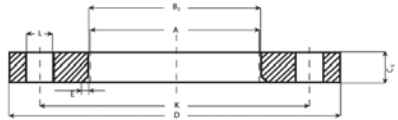


CATALOG FLANȘE LIBERE

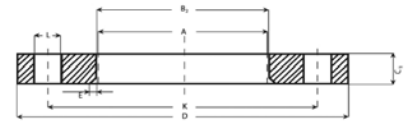
		<p>Flanșă liberă Tip 02 Pn 6, formă A EN 1092-1, dimensiuni conform ISO Înlocuiește DIN 2642</p>								
Dimensiuni										
DN mm	A mm	D mm	B2 mm	K	C1	E	Nr.	Șurub	L	Kg/ buc.
15	21.3	80	25.0	55	12	3	4	M10	11	0.39
25	33.7	100	38.0	75	14	4	4	M10	11	0.69
32	42.4	120	46.0	90	16	5	4	M12	14	1.12
40	48.3	130	53.0	100	16	5	4	M12	14	1.29
50	60.3	140	65.0	110	16	5	4	M12	14	1.42
65	76.1	160	81.0	130	16	6	4	M12	14	1.76
80	88.9	190	94.0	150	18	6	4	M16	18	2.84
100	114.3	210	120.0	170	18	6	4	M16	18	3.10
125	139.7	240	145.0	200	20	6	8	M16	18	4.12
150	168.3	265	174.0	225	20	6	8	M16	18	4.53
200	219.1	320	226.0	280	22	6	8	M16	18	6.51
250	273.0	375	281.0	335	24	8	12	M16	18	8.32
300	323.9	440	333.0	395	24	8	12	M20	22	11.10

		<p>Flanșă liberă Tip 02 Pn 10/16/25/40, formă A EN 1092-1, dimensiuni conform ISO Înlocuiește DIN 2642</p>								
Dimensiuni										
DN mm	A mm	D mm	B2 mm	K	C1	E	Nr.	Șurub	L	Kg/ buc.
15	20,0	95	24,0	65	14	3	4	M12	14	0,65
15	21,3	95	25,0	65	14	3	4	M12	14	0,65
20	26,9	105	31,0	75	16	4	4	M12	14	0,91
25	33,7	115	38,0	85	16	4	4	M12	14	1,08
32	38,0	115	43,0	100	18	5	4	M16	18	1,77
32	42,4	140	47,0	100	18	5	4	M16	18	1,77
40	44,5	150	50,0	110	18	5	4	M16	18	2,02
40	48,3	150	53,0	110	18	5	4	M16	18	2,02



Flanșă liberă

Tip 02 Pn 10/16, formă A
EN 1092-1, dimensiuni conform ISO și metric
Înlocuiește DIN 2642



Dimensiuni

DN mm	A mm	D mm	B2 mm	K	C1	E	Nr.	Șurub	L	Kg/ buc.
50	54.0	165	59.0	125	19	5	4	M16	18	2.52
50	60.3	165	65.0	125	20	5	4	M16	18	2.52
65	70.0	185	75.0	145	20	6	4	M16	18	3.05
65	76.1	185	81.0	145	20	6	4	M16	18	3.05
65	76.1	185	81.0	145	20	6	8	M16	18	3.05
80	84.0	200	89.0	160	20	6	8	M16	18	3.48
80	88.9	200	94.0	160	20	6	8	M16	18	3.48
100	104.0	220	109.0	180	22	6	8	M16	18	4.20
100	108	220	113.00	180	22	6	8	M16	18	4.20
100	114.3	220	120.0	180	22	6	8	M16	18	4.20
125	129.0	250	134.0	210	22	6	8	M16	18	5.21
125	139.7	250	145.0	210	22	6	8	M16	18	5.21
150	154.0	285	159.0	240	24	6	8	M20	22	6.89
150	159.0	285	164.0	240	24	6	8	M20	22	6.89
150	168.3	285	174.0	240	24	6	8	M20	22	6.89



Flanșă liberă


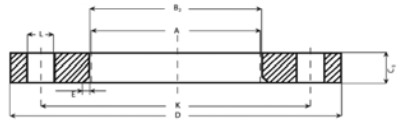
Tip 02 Pn 10, formă A
EN 1092-1, dimensiuni conform ISO și metric
Înlocuiește DIN 2642


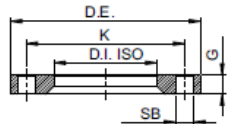


Dimensiuni

DN mm	A mm	D mm	B2 mm	K	C1	E	Nr.	Șurub	L	Kg/ buc.
200	204.0	340	210.0	295	24	6	8	M20	22	8.87
200	219.1	340	226.0	295	24	6	8	M20	22	8.87
250	254.0	395	262	350	26	8	12	M20	22	11.20
250	273.0	395	281.0	350	26	8	12	M20	22	11.20
300	304.0	445	312.0	400	26	8	12	M20	22	12.80
300	323.9	445	333.0	400	26	8	12	M20	22	12.80
350	355.6	505	365.0	460	30	8	16	M20	22	19.40
400	406.4	565	416.0	515	32	8	16	M24	26	26.40
500	508.0	670	519.0	620	38	8	20	M24	26	38.50

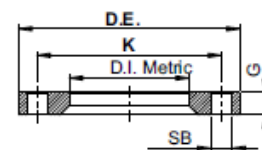
600	609.6	780	622.0	725	42	8	20	M27	30	52.20
-----	-------	-----	-------	-----	----	---	----	-----	----	-------

	Flanșă liberă Tip 02 Pn 16, formă A EN 1092-1, dimensiuni conform ISO Înlocuiește DIN 2642									
	Dimensiuni									
DN mm	A mm	D mm	B2 mm	K	C1	E	Nr.	Șurub	L	Kg/ buc.
200	219.1	340	226.0	295	26	6	12	M20	22	9.31

	Flanșă liberă aluminiu EN 1092-1, dimensiuni conform ISO Înlocuiește DIN 2642									
	Dimensiuni									
DN mm	PN	D.I.	D.E.	G	Nr.	Ø	K	Kg/ buc.		
10	10	19	90	12	4	14	60	0.179		
15	10	24	95	12	4	14	65	0.197		
20	10	30	105	12	4	14	75	0.240		
25	10	36	115	12	4	14	85	0.287		
32	10	46	140	16	4	18	100	0.555		
40	10	54	150	16	4	18	110	0.627		
50	10	65	165	16	4	18	125	0.744		
65	10	81	185	16	4	18	145	0.904		
80	10	94	200	18	8	18	160	1.102		
100	10	119	220	18	8	18	180	1.221		
125	10	145	250	18	8	18	210	1.500		
150	10	173	285	18	8	22	240	1.829		
200	10	225	340	20	8	22	295	2.619		
250	10	179	395	22	12	22	350	3.412		
300	10	329	445	22	12	22	400	3.959		



Flanșă liberă aluminiu
 EN 1092-1, dimensiuni conform sistem metric
 Înlocuiește DIN 2642



Dimensiuni								
DN mm	PN	D.I.	D.E.	G	Nr.	Ø	K	Kg/ buc.
25	10	33	115	12	4	14	85	0.292
32	10	42	140	16	4	18	100	0.567
40	10	48	150	16	4	18	110	0.648
50	10	60	165	16	4	18	125	0.766
65	10	75	185	16	4	18	145	0.936
80	10	90	200	18	8	18	160	1.131
100	10	111	220	18	8	18	180	1.292
125	10	136	250	18	8	18	210	1.597
150	10	161	285	18	8	22	240	1.984
200	10	212	340	20	8	22	295	2.862
250	10	264	395	22	12	22	350	3.796
300	10	315	445	22	12	22	400	4.384
350	10	362	505	22	16	22	460	5.480
400	10	413	565	25	16	25	515	7.429
450	10	465	615	25	20	25	565	8.010
500	10	517	670	28	20	25	620	10.148
600	10	618	780	30	20	30	725	13.403
700	10	715	895	40	24	30	840	22.991
800	10	825	1015	40	24	33	950	27.728
900	10	930	1115	44	28	33	1050	32.799
1000	10	1030	1230	44	28	36	1160	39.199
1200	10	1240	1455	52	32	39	1380	59.146